

## Letter from President.....



### November 2016 – President’s Message

What a great October meeting! I loved the program presented by Pauline Rios. How appropriate that teamwork was our topic. The food was great. I do believe that our committee break-out sessions were productive. Many thanks to our Programs Committee.

We had two guests at our meeting, Betty Kaegel, Kansas City Royals, and Lisa Pecina, Shook Hardy Bacon. I spent time getting to know each of them. We had a great time. I believe they will both be visiting us again. Thank you, Lisa Lopez, for inviting them and thanks to our members for making them feel welcome. Inviting guests is an essential part of recruitment and retention. Please consider inviting a co-worker or other business alliance to attend our November meeting.

Ladies—Don your country club best! This November we will be meeting at Mission Hills Country Club. The meal is sure to be outstanding. The program, presented by Frankie Elder, will cover dealing with Holiday stress, not that any of us suffer from that, especially not at the holidays.

At this time we need all members to please make sure you are able to log in to the corporate website at [www.ewiconnect.com](http://www.ewiconnect.com). You may have a problem logging in and need assistance from Corporate. Call the corporate office, 1-877-439-4669, and speak with Kristine Pepin or Kristen Harmston, and they will help you with the process.

We are moving into the most stressful time of year—extra stress in the flower business. Let’s not forget to enjoy the season. Even with the extra stress, Christmas is truly my favorite time of year. Sometimes it is the only time we see some of our family. My boys will both be home, which will be wonderful, but also somewhat stressful. If you have teenage boys, you understand.

So November, we will learn how to make this season much less stressful. December, we will all be at the Christmas meeting, relaxed and ready to just enjoy the evening.

Thank you for all that you do to make this organization great!

Sheryl

### 2016 – 2017 Officers and Directors

#### President

Sheryl White  
The Fiddly Fig

#### Vice President

MaryJo Spino  
Jackson County, MO

#### Secretary

Laura Bird  
Treat America Food Services

#### Treasurer

Tracie Giron  
KPMG LLP

#### Sergeant-At-Arms

Janie Williams  
MRI Global

#### Membership – Co Chairs

Rebecca Geracie, KC Deli Provisions  
Kathy Scott, Balls Food Stores

#### Programs

Edie Marie Battaglia  
AT & T

#### Fundraising

Lisa Lopez  
The Kansas City Star

#### Communications

Tracy Jankowski  
tracelette™

#### Directors At Large

Diane Arnold, Smithfield Foods  
Vernita Beck, Commerce Bancshares, Inc.

#### Advisor

Kathy Scott  
Balls Food Stores

## Hospitality

Please direct updates regarding birthdays, illness, sympathy, anniversaries, congratulations and announcements to:

**Hospitality Chair Kim Stripling,**  
WDAF-TV/Fox 4, (816) 853-5946, Kim.Stripling@wdaftv4.com.

### EWI Rep Anniversaries

Diane Arnold 11/16/2005  
Smithfield Food Inc.

### Life Member Anniversaries

Sandy Fockler 11/15/1989  
Energy One, LLC

### Firm Anniversaries

Commerce Bancshares, Inc. 11/07/1973

## **EWI of KANSAS CITY 2016 MEMBER FIRMS**

AT&T  
Balls Food Stores  
Blue Cross Blue Shield of Kansas City  
The Civic Council of Greater Kansas City  
Commerce Bancshares, Inc.  
The Fiddly Fig  
Financial Holding Corporation  
Jackson County, Missouri  
The Kansas City Star  
KC Deli Provisions  
KPMG LLP  
MRIGlobal  
Perfect Output, L.L.C.  
Smithfield Food Inc.  
Stinson Leonard Street LLP  
tracelette™  
Treat America Food Services  
WDAF-TV/FOX 4

18 Member Firms  
22 Representatives  
10 Life Members

## Member Firm Updates

Featuring all the happening news from our Member Firms and their Representatives! This month we have the opportunity to T.E.A.M. up with these Member Firms to simplify the 'giving' in Thanksgiving. Please join us for one of these important causes and help someone in need!

### Civic Council of Greater KC:

- KC Rising is a collaboration of business, civic and government leaders and our very own Member Firm, Civic Council of Greater KC is part of the Initiative. Member Representative Consula Ross is also involved in some important ventures on her own. She is the founder of Surviving the Odds, Inc. a non-profit organization that focuses on the issue of breast cancer in women of color. The organization hosts mammogram partys semi-monthly. November 12<sup>th</sup> is her biggest annual party. Please visit [www.stofoundation.org](http://www.stofoundation.org) and contact her at if you wish to volunteer or attend this life changing event.

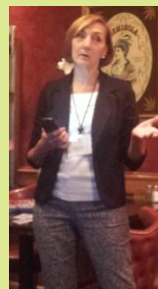
### WDAF-TV/FOX 4:

- It's in the Bag! This Member Firm brunch event benefits the FOX 4 Love Fund for Children. EWI Kansas City has sponsored a table of 10 for November 12<sup>th</sup> and is in need of 3 additional Member Representatives to attend. The board approved to cover half of the cost of the ticket. If interested in attending, please contact Sheryl White.

Yes, both of these events are on November 12<sup>th</sup>! Pick one and show your fellow EWI Members your support! But, if you can't make either one of these.....

### The Kansas City Star:

- Candace Spurny took a moment at the October meeting to share information about her service on the Board of the Mayors' Prayer Breakfast. This event is slated for February, hosted by Kathy Quinn and benefiting Gilda's Club. ....Here she is proposing a table sponsorship to the group! Stay tuned!



**We are blessed to have so many amazing members making a difference in Kansas City.**

## Meet your 2016-2017 EWI Kansas City Board Members

“Our theme tonight is **The Power of Commitment**” ~ Vernita Beck, September 2016 Installation Meeting

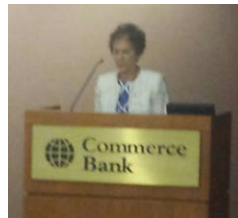
Each month we will introduce you to several of our board members and their commitment for the new term.

*In no particular order.....*



**Director-at-Large**, Diane Arnold/Smithfield Foods

Diane is currently the Executive Assistant to Tim Zimmer, SVP, Insights and Field Communications and Tom Danneker, VP and General Manager, Pre-Rigor Products. She's been with Smithfield for almost 19 years and says she likes the fact that there is nothing boring about her job. She has been with EWI for eleven years.



**Director-at-Large**, Vernita Beck/Commerce Bancshares, Inc.

Vernita is Executive Assistant to the Chairman, Jonathan Kemper and I really enjoy being in a position to see all the things he is involved in and watching how things get done in Kansas City. She has been with EWI for 24 years.

Together, as Director at Large they may play various roles this year. Their main responsibility will be to manage the Scholarship Program, but at different times, it could be different roles. A Director-at-Large's duties may include other duties as designated by the Board or President.

**Our commitment this year will be flexibility.** Tom Robbins says, “Stay committed to your decision, but stay flexible in your approach”. Being Director-at-Large will require flexibility.

Thank you to all who are participating on these committees this term. We could not do it without each of you!

**2016 – 2017  
EWI Kansas City Committees**

**Fund-raising**

Lisa Lopez – Chair  
Candace Spurny  
Ellen Wall  
Kristen Williams  
Marcia Zanko

**Philanthropy**

Kim Stripling - Chair  
Janet Biscoe  
Kathy Mehaffey  
Janie Williams

**Membership**

Rebecca Geracie – Co Chair  
Kathy Scott – Co Chair  
Victoria Flower  
Deidre McClellan  
Mary Jo Spino

**Programs**

Edie Marie Battaglia - Chair  
Laura Bird  
Tracy Jankowski  
Consuelo Ross  
Debbie Ross



**Programs Committee Members: Edie Marie B., Tracy J., Consuelo R., Laura B. during the October Membership Meeting at McCoy's.**



## “Be our guest” at the October 2016 Membership Meeting

Pictured on the left are Betty K from the KC Royals with Lisa Lopez and on the right is Lisa P from Shook, Hardy & Bacon with our Guest Speaker Pauline Rios from Brava Enterprises.



**All eyes on Pauline as she explains how all our talents combined make for a great team!**

# EWI MEMBERSHIP MEETING

WEDNESDAY, NOVEMBER 16, 2016



**Location:** Mission Hills Country Club, 5400 Mission Dr., Prairie Village, KS 62208, (913) 722-5400

**Networking:** 5:30 P.M. Thanksgiving Traditions – Share the special or unique things your family does for the holiday!

**Chapter Business:** 6:15 P.M.

**Dinner & Program:** 6:30 P.M. Coping with Holiday Stress

**Program:** Frankie Elder, CHT is a Transformation Educator who is most fulfilled by helping others succeed. Her ability to do this with a clear vision and a no-nonsense approach to change is fresh and inspiring. Frankie's passion is to empower people with actionable skills that can be applied to many areas of life and most often produce immediate results. We can expect guidance, encouragement, support, information, inspiration, strategies, clarity, and most importantly, change. She will be sharing her absolute favorite thing with us, providing a fresh outlook on perspective that will be useful in stress reduction as well as reducing or even eliminating procrastination. Who wouldn't be thankful for that during the busy holiday season?!

**Menu:**

- Mission Hills Country Club Skinless Fried Chicken
- Mashed Potatoes with Gravy
- Green Beans
- Buttermilk Biscuit
- Mini Sweets crafted by the Pastry Chef

Beverages: Iced Tea, Coffee, Soda or Cash Bar

**Reservations:** Active members have an automatic reservation for all monthly meetings but we would still really appreciate confirmation. To RSVP by **EMAIL:** ewikansascity@gmail.com or by **PHONE:** 913-832-0771 to Tracy Jankowski **by noon**, on Wednesday, November 9, 2016.

**Please include any dietary concerns or food allergies with your RSVP! Thank you.**

**Mail Checks To:** Tracie Giron, KPMG LLP, 1000 Walnut Street, Suite 1100, Kansas City, MO 64106  
**\$35.00 per attendee, \$30.00 per Sustaining/Life Member**

Name: \_\_\_\_\_ Member firm: \_\_\_\_\_

I will \_\_\_\_\_ will not \* \_\_\_\_\_ attend the **November 16, 2016** meeting. \* \_\_\_\_\_ *Donate my meeting fee to the Scholarship Fund*

I will bring \_\_\_\_\_ guest(s). Guests/Names: \_\_\_\_\_

Total amount enclosed \$ \_\_\_\_\_ (or give to Tracie Giron at the meeting)  
**If you find it necessary to cancel, please email [ewikansascity@gmail.com](mailto:ewikansascity@gmail.com).**

## EWI® Mission and Vision

### **MISSION**

Executive Women **International**® brings together key individuals from diverse business for the purpose of promoting member firms, enhancing personal and professional development, and encouraging community involvement.

### **VISION**

To be a global women's organization of 5,000 engaged members empowering others for positive change.

## Glossary of Terms for EWI

**BCDP** – Business Career Development Program

**LCAM** – Leadership Conference Annual Meeting

**ASIST** – Adult Students in Scholastic Transition

**EWISP** – Executive Women International Scholarship Program

## **SHARE YOUR FIRM'S NEWS!**

**What is new and exciting  
happening with you or your firm?  
We want to hear!!**

Please send items for publication to  
**Tracy Jankowski at**  
**[tracelette@outlook.com](mailto:tracelette@outlook.com)** by the 15<sup>th</sup>  
**for the following month.**

## About Our Chapter Meeting

**Meeting Dates:** The Kansas City Chapter meets the third Wednesday of each month, unless otherwise specified.

### **Reservation Policy:**

Each active representative shall RSVP to [ewikansascity@gmail.com](mailto:ewikansascity@gmail.com) by noon on Wednesday prior to the Wednesday meeting of the Chapter and indicate whether he/she will attend.

Sustaining, Life, Transitional and Honorary members shall notify on Wednesday prior to the Wednesday meeting of the Chapter; if no notification is received, they will not be expected to attend and will incur no liability

### **Meeting Notice:**

The monthly meeting notice will include details of the meeting.

### **Attendance:**

All representatives must attend the program/business portion of any regularly scheduled meeting in order to constitute attendance. Please let the Sergeant-at-Arms or President know if you need to leave early.

Each representative must attend a minimum of six meetings a year. Each member firm must be represented by a representative or an executive at seven meetings a year. A firm's membership could be forfeited for noncompliance.

### **Leave of Absence:**

A leave of absence may be requested in writing to the President.



## Social Media Corner!

Connect and Engage with EW!.....

Now that our email address is Google based at [ewikansascity@gmail.com](mailto:ewikansascity@gmail.com), we have an important component in staying connected and relevant online. EW's Google+ page has been created. The same posts you see on other social media platforms will now be shared on the Google+ page and very visible in the Google Search Engines!

These means that when people are searching non-profit organizations in Kansas City, over time we will rise to the top of their searches. Continuing to engage in our posts on Facebook will eventually connect our Google+ and Facebook pages on the Search Engines organically. When this process is working correctly, our Google+, Website and Facebook page will be top three!

**We can make it happen!**

*In closing,*

- ❖ Tracie G shared insight about the gift of life and the wonderful people we have met along our journey. During the October Invocation, she read, "Some of them inspire me, challenge me, love me and encourage me. All of them helped me realize how meaningful and beautiful my life is."



- ❖ From Chapter President, Sheryl White:

**Quality:** Countless, unseen details are often the only difference between mediocre and magnificent.

Questions or Comment to:

[www.ewikansascity.org](http://www.ewikansascity.org)

[ewikansascity@gmail.com](mailto:ewikansascity@gmail.com)